

Stormwater Series 300

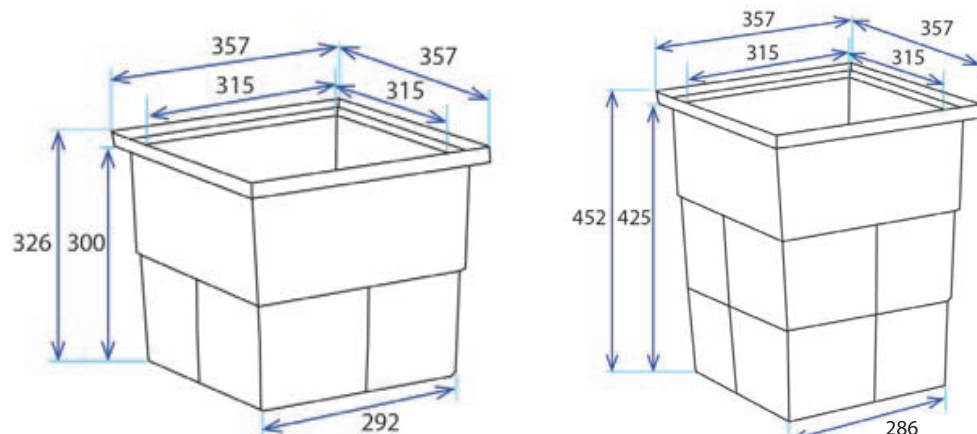
PIT AND GRATES



SPEC PACK

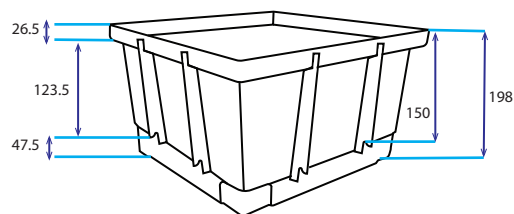
Stormwater Pit and Risers - Series 300

Designed as a drainage collection point by itself or for connection to the EasyDRAIN Channel and Grate systems.



Series 300 Shallow Stormwater Pit

Series 300 Deep Stormwater Pit



Series 300 Riser

EI CODE	PRODUCT DESCRIPTION	KG's	CAPACITY
84811	Series 300S Stormwater Pit Case only	1.8	25.5L*
84816	Series 300D Stormwater Pit Case only	2.3	42.2L*
84221	Series 300 Stormwater Pit Riser	1.0	

*minimum capacity, due to the tapered nature of the pit, it will hold slightly more than the listed capacity

PRODUCT APPLICATIONS

Outdoor Areas
Non Trafficable Applications
High rainfall and waterflow areas
Gardens
Walkways

GRATE OPTIONS



Galvanised Steel



Aluminium



EuroDesign Stainless Steel

COVER OPTIONS



Polymer



Galvanised Checker

Grate options are available in complete units for both Deep and Shallow. They are also sold as separates - pit only and grate only. All grates for Series 300 are Class A.



Polymer Warranty



Metal Warranty

If you are after Revit files or additional information, get in touch with us for more details: marketing@everhard.com.au

Stormwater Series 300

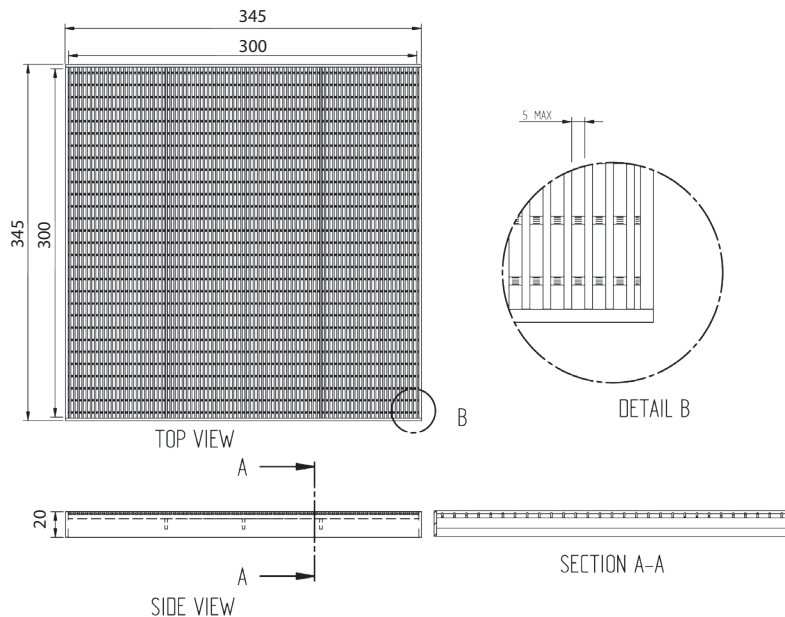
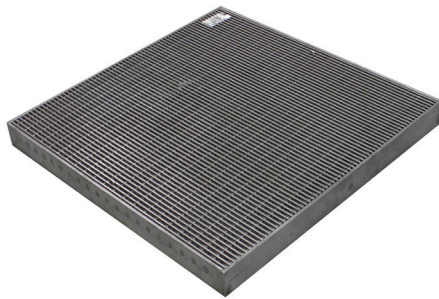
PIT AND GRATES



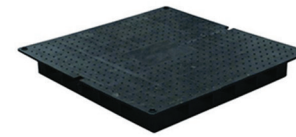
SPEC PACK

97846 - Series 300 EuroDesign 316 Stainless Steel Heel Friendly Grate Only

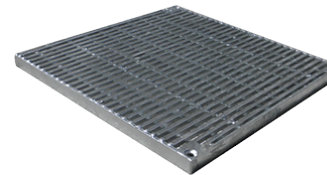
97847 - Series 300 EuroDesign 316 Stainless Steel Heel Friendly Anti- vandal Grate Only



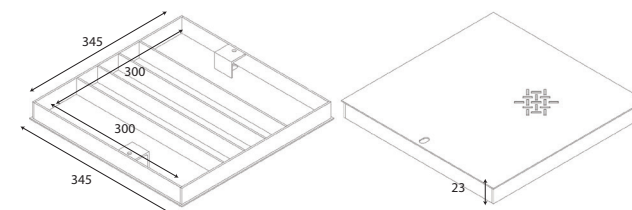
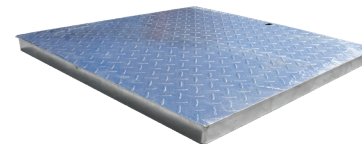
84953 - Series 300 Polymer Cover



21432 - Series 300 Heel Friendly Galvanised Grate



84829 - Series 300 Galvanised Checker Plate Cover



Stormwater Series 300

PIT AND GRATES



ESTABLISHED
1926

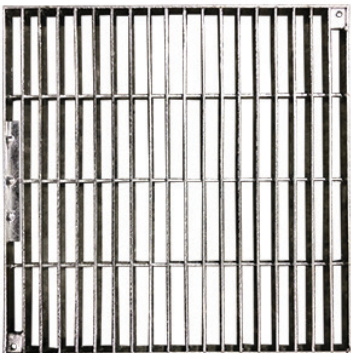
SPEC PACK

Stormwater Pit Grates- Series 300

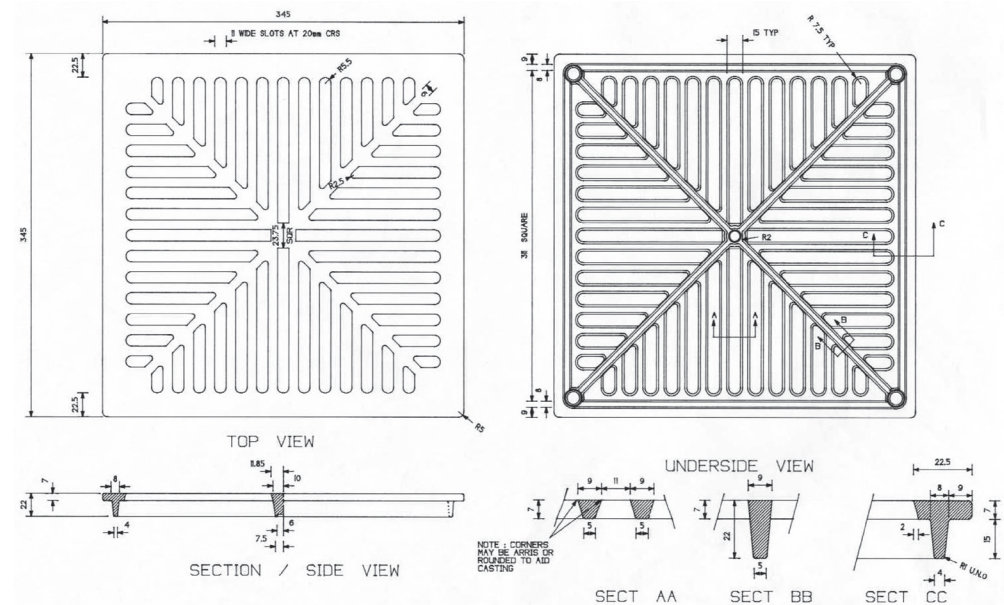
There is a variety of grates available to suit the Series 300 Stormwater Pits. Please check each grates details to ensure it is appropriate for your chosen application.

EI CODE	PRODUCT DESCRIPTION	CLASS LOADING	CLEAR OPENING	FRAME SIZE	GRATE DEPTH	OPEN AREA	WEIGHT (KG)
84827	Series 300 Pit Galvanised Grate Only	A	300 x 300	345 x 345	20	89,290 sqmm	3.72
84845	Series 300 Aluminium Grate Only	A	300 x 300	345 x 345	22		1.00
97846	Series 300 Eurodesign 316 Stainless heel safe Grate Only	A	300 x 300	345 x 345	20	55,084 sqmm	4.00
97847	Series 300 Eurodesign 316 Stainless heel safe anti-vandal Grate Only	A	300 x 300	345 x 345	20	55,084 sqmm	4.00
84953	Series 300 Polymer Cover	A	300 x 300	345 x 345			
84829	Series 300 Galvanised Checker Plate Cover	A	300 x 300	345 x 345	23		4.5

84827 - Series 300 Galvanised Grate Only



84845 - Series 300 Aluminium Grate Only



Stormwater Series 300

PIT AND GRATES



SPEC PACK

Stormwater Pit Accessories - Series

To get the most effective use out of your stormwater pit there is some suggested accessories that can be used to allow for seamless installs and waterflow. To find out more information on each particular accessory, please check the Everhard website product pages by search the code.

97903 - SQID 300 Stormwater Management Device

Guards against pollutants and other debris being washed into our oceans via our ecologically fragile rivers and streams. Pit Pollutant Traps can simply be fitted underneath the grate which will then hold it in place.

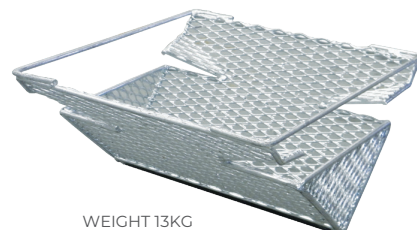
345 L x 345 W x 200mm H | 2kg



13500 - Trash Screen V Basket to suit 300 Pit

The EVERHARD Trash Screen is a rigid "Vee" which fits closely into the throat of the Pit below the Grate. These are designed to be simply placed into position under the standard Steel Grate to provide an efficient and cost-effective guard against trash entering the stormwater drains.

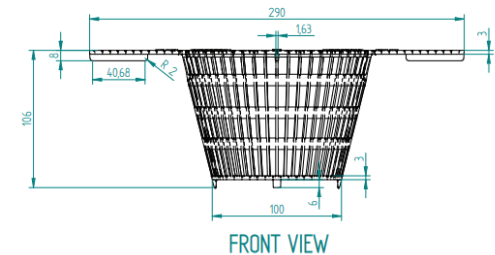
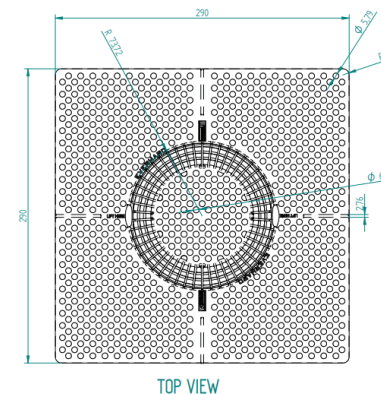
300 L x 300 W | 13kg



84042 - Series 300 Stormwater Pit Leaf Basket

Assists the flow of the surface water by providing a barrier against leaves and other debris entering the waterways. Easy "drop in" installation.

290 L x 290 W x 106mm H | 0.3kg



80080 - Pit Boss

Eliminates poor pipe connections to polypropylene pits due to subsidence of the ground or poor installation connections.

130 L x 130 W x 55mm H | 0.14kg

