

Please inspect your new toilet suite before installation. No claims will be accepted after installation is completed.

Contents: Pan, Cistern, Seat & Cistern Bolts (pan screws not included.)

FEATURES

Material: White Vitreous China

Weight: Pan: 34Kg Cistern: 16Kg

Fixing: Toilet Pan screwed and siliconed to floor. Cistern bolted directly to Pan.

Standards: AS 1172.1 & AS1172.2

Cistern Fixing: Bolt directly to pan using bolts provided.

Rim of Pan: Boxed Rim to prevent splashing and direct water more efficiently.

Trap Configurations: P trap (Convert to S trap using approved plastic bend.)

Set Out: S trap 80mm to 210mm depending on type plastic bend required. P trap 185mm fixed (height from floor to centre of outlet on pan, allow for 8mm fall to point in wall).

Seat: Polypropylene seat, soft close, detachable with chrome hinges.

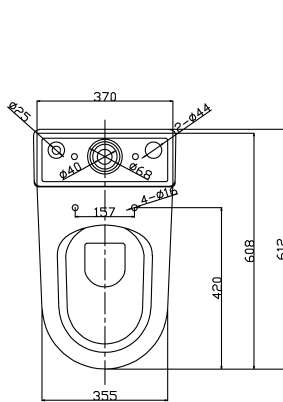
Water Inlet: Bottom left or bottom right. WDI inlet.

Water Rating: Complies with Australian standards at 4.5L full flush and 3.1L half flush.

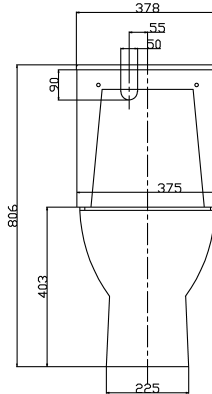
Outlet Value: Quality outlet valve for reliability and quiet operation. (Quick-release washer change feature saves time and money).



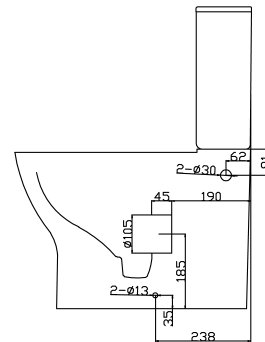
Note: Ensure that the inlet water pressure does not exceed 500kPa as per AS/NZ35003.3.2



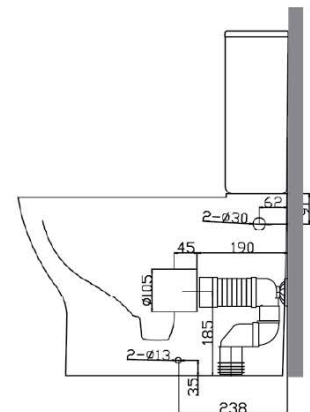
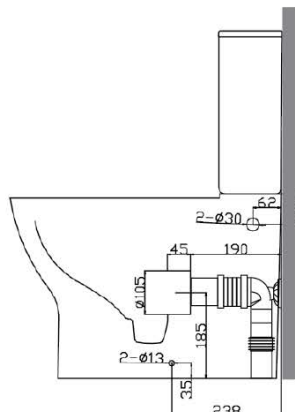
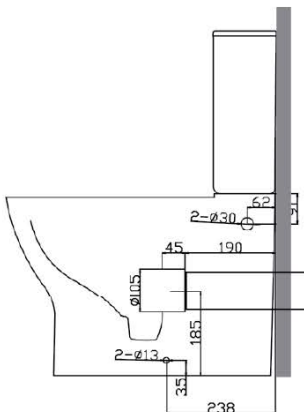
P Trap installation



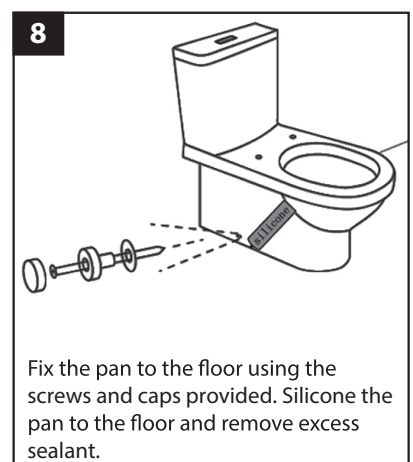
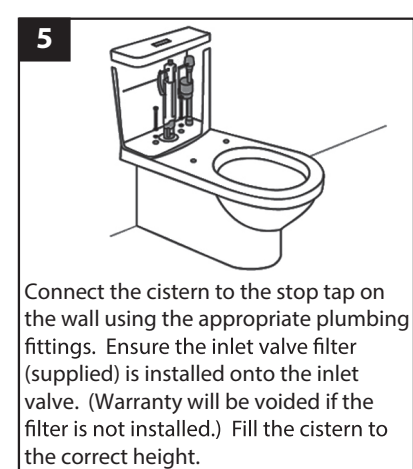
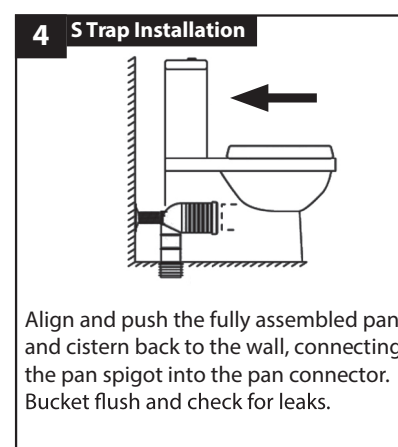
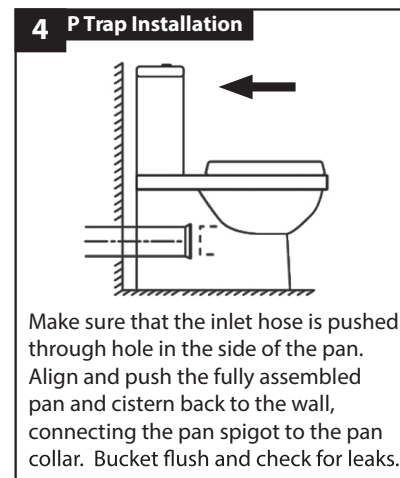
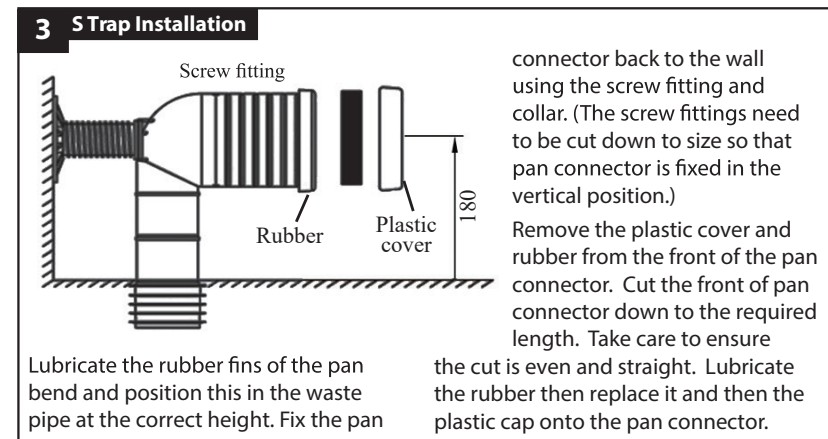
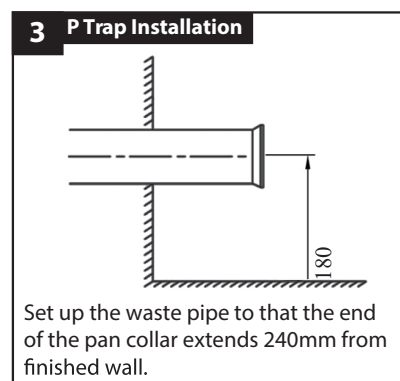
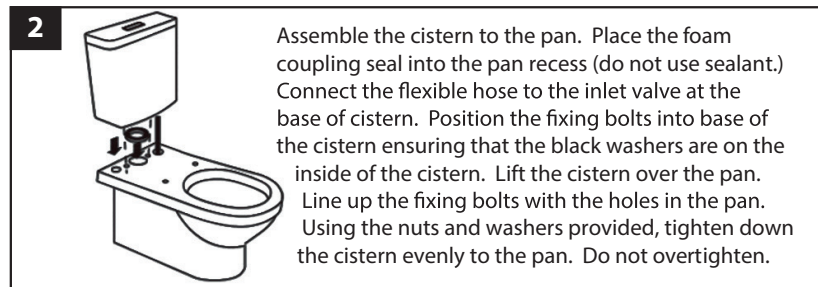
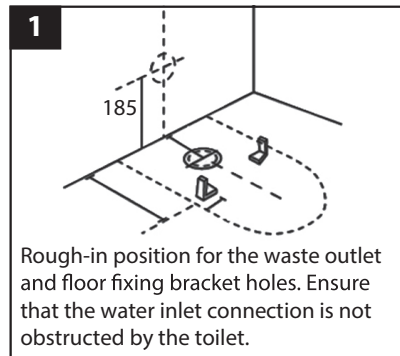
**S Trap installation
80 - 150mm set out**



**S Trap installation
150 - 210mm set out**



Note: Everhard recommends that the Classic Curve Back to Wall Toilet Suite is not installed using an offset pan connector when using the uniconnector to install the pan as this may cause flushing problems





Classic Curve Back to Wall Toilet Suite

INSTALLATION INSTRUCTIONS

Plumber Instructions:

Please ensure that these installation instructions are left with the end user for future reference. It is recommended that the toilet seat and cover be installed after all trade-work is finished. Note: All measurements for rough-in should be taken from finished wall/floor. Please check all measurements against the actual toilet before commencing as variances do occur.

Cleaning Recommendations:

The high quality vitreous china finish can be maintained by simply using mild soapy water and wiping over. Sanitary ware should not be cleaned with abrasive materials e.g. steel wool/scourers. Do not use any corrosive or abrasive cleaning agents containing acids or scouring agents as this may lead to surface damage. Bleaches can also discolour seats and hinges and therefore should not be used. Do not use any toilet cleaners in the cistern, as the chemical compound may affect the internal mechanisms. After cleaning, rinse with clean water and polish with a clean soft cloth.