

Stormwater Series 600

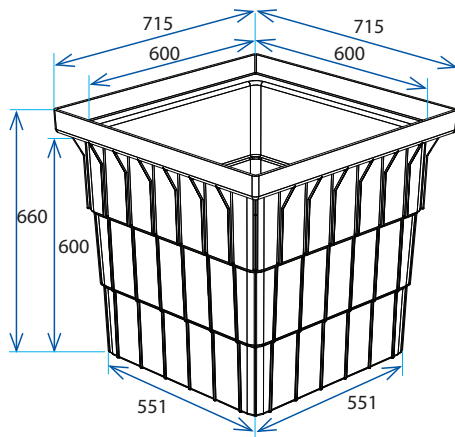
PIT AND GRATES



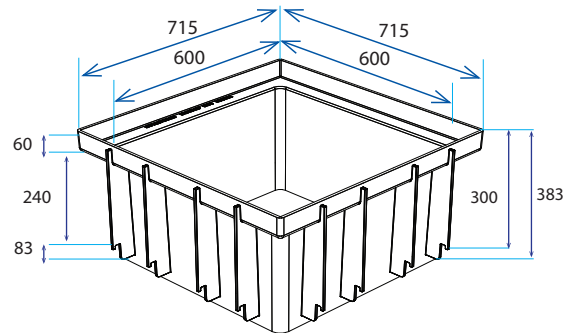
SPEC PACK

Stormwater Pit and Grates - Series 600

Designed as a drainage collection point by itself or for connection to the EasyDRAIN Channel and Grate systems.



Series 600 Stormwater Pit



Series 600 Riser

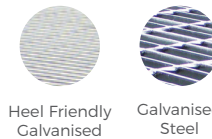
EI CODE	PRODUCT DESCRIPTION	KG's	CAPACITY
80010	Series 600 Stormwater Pit Case only	14.0	182L*
80036	Series 600 Stormwater Pit Riser	8.8	

*minimum capacity, due to the tapered nature of the pit, it will hold slightly more than the listed capacity

PRODUCT APPLICATIONS

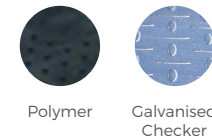
Outdoor Areas
Non Trafficable Applications (Class A)
Light Traffic Load (Class B)
High rainfall and waterflow areas
Gardens

GRATE OPTIONS



Some Grate options are available in complete units. They are also sold as separates - pit only and grate only. Grates for 600 series come in a variety of Class A and B, please refer to specific grate for details

COVER OPTIONS



If you are after Revit files or additional information, get in touch with us for more details:
marketing@everhard.com.au

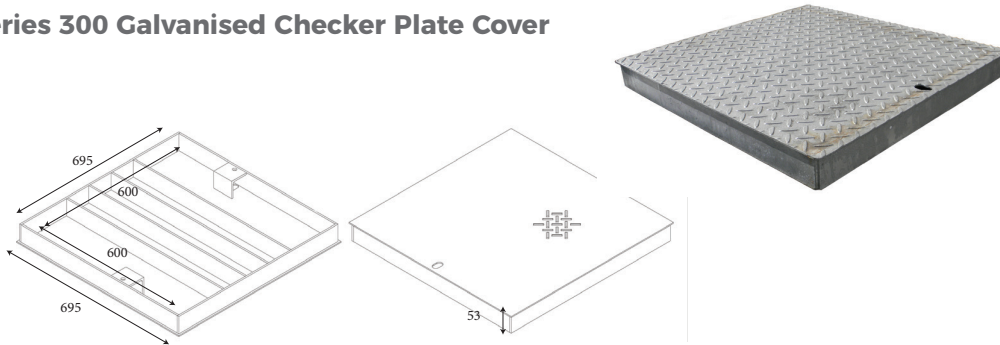
Stormwater Series 600

PIT AND GRATES

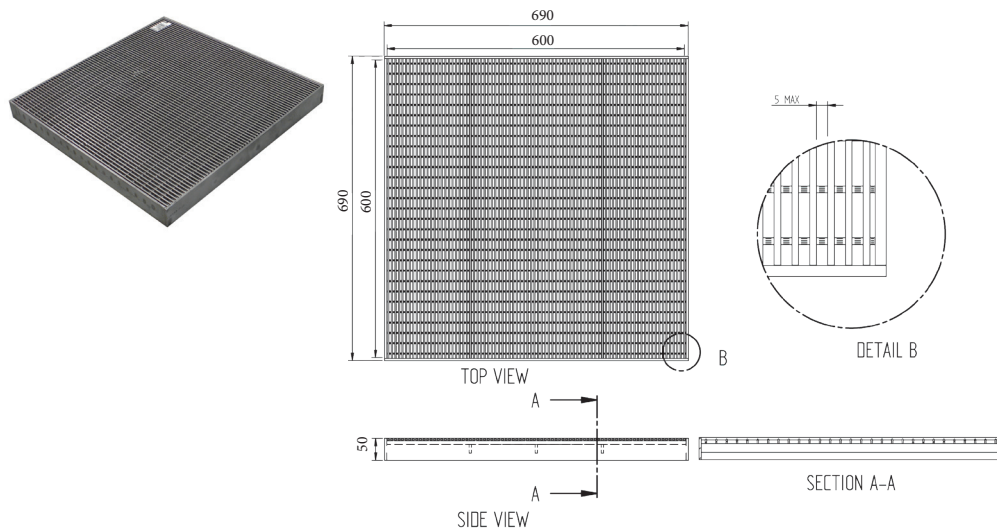


SPEC PACK

21052, 21054, 21053 & 21057- Series 300 Galvanised Checker Plate Cover



97855 - Series 600 EuroDesign 316 Stainless Steel Heel Friendly Grate Only



Stormwater Series 600

PIT AND GRATES

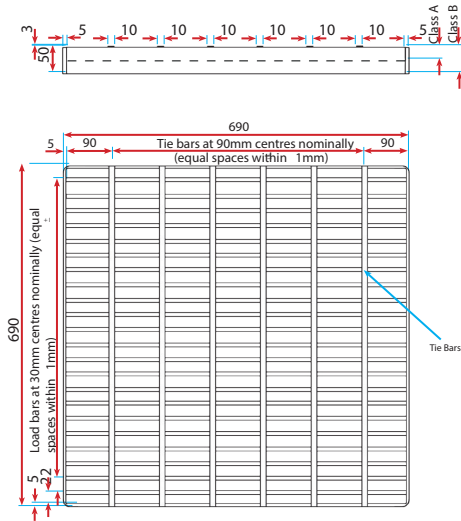
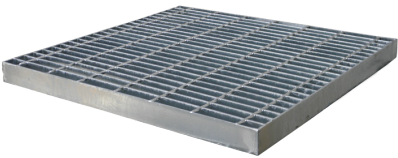
SPEC PACK

Stormwater Pit Grates- Series 600

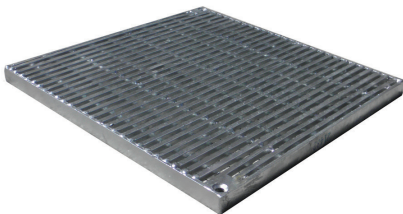
There is a variety of grates available to suit the Series 600 Stormwater Pits. Please check each grates details to ensure it is appropriate for your chosen application.

EI CODE	PRODUCT DESCRIPTION	CLASS LOADING	CLEAR OPENING	FRAME SIZE	GRATE DEPTH	OPEN AREA	WEIGHT (KG)
21043	Series 600 Pit Galvanised Grate Only	A	600 x 600	690 x 690	50	359,520 sqmm	22.0
21044	Series 600 Pit Galvanised Grate Only	B	600 x 600	690 x 690	50	359,520 sqmm	36.0
21434	Series 600 Squareline HP Heel Friendly Grate	A/B	680 x 680	690 x 690	50		33.6
21480	Series 600 Concrete Cover	B		695 x 695	53		
21052	Series 600 Galvanised Steel Checker Plate Cover	A	600 x 600	695 x 695	53		19.7
21054	Series 600 Bolt down Galvanised Steel Checker Plate Cover	A	600 x 600	695 x 695	53		23.5
21053	Series 600 Galvanised Steel Checker Plate Cover	B	600 x 600	695 x 695	53		27.0
21057	Series 600 Bolt down Galvanised Steel Checker Plate Cover	B	600 x 600	695 x 695	53		36.5
97855	Series 600 EuroDesign 316 Stainless Steel Heel Safe Grate Only	a	600 x 600	690 x 690	50		41.0

21043 & 21044 - Series 600 Galvanised Grate Only

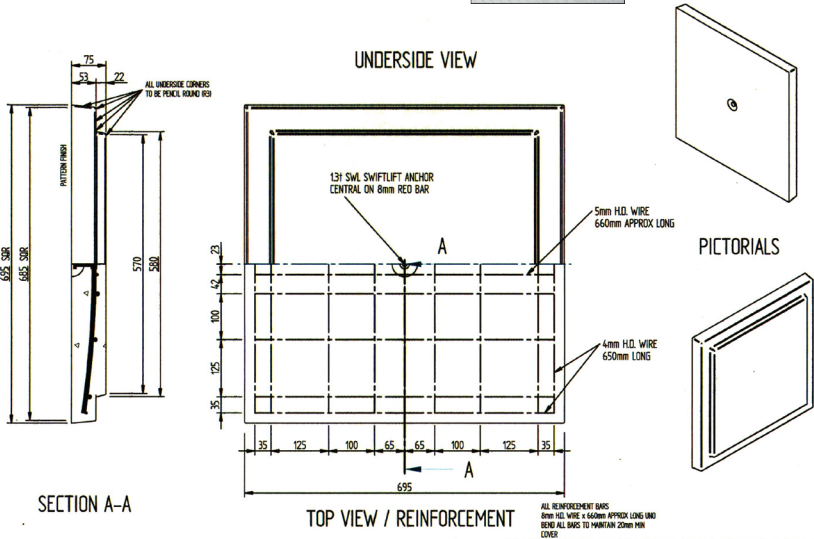
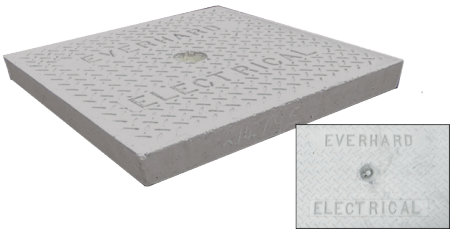


21434 - Series 600 Squareline HP Heel Friendly Grate



21479 - Series 450 Concrete Cover

Available in plain, or with 'ELECTRICITY' or 'COM-CAB' embossed



Stormwater Series 600

PIT AND GRATES



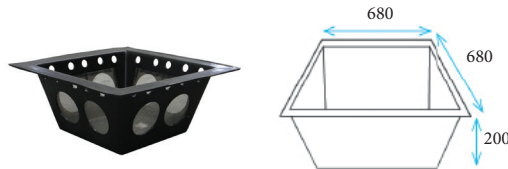
SPEC PACK

Stormwater Pit Accessories - Series 600

To get the most effective use out of your stormwater pit there is some suggested accessories that can be used to allow for seamless installs and waterflow. To find out more information on each particular accessory, please check the Everhard website product pages by search the code.

97905 - SQID 600 Stormwater Management Device

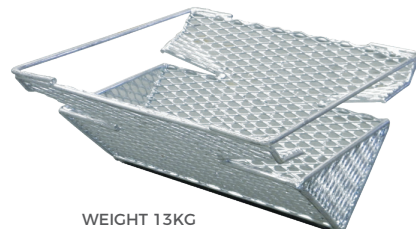
Guards against pollutants and other debris being washed into our oceans via our ecologically fragile rivers and streams. Pit Pollutant Traps can simply be fitted underneath the grate which will then hold it in place.



680 L x 680 W x 200mm H | 4.5kg

13502 - Trash Screen V Basket to suit 600 Pit

The EVERHARD Trash Screen is a rigid "Vee" which fits closely into the throat of the Pit below the Grate. These are designed to be simply placed into position under the standard Steel Grate to provide an efficient and cost-effective guard against trash entering the stormwater drains.



680 L x 680W | 13kg

WEIGHT 13KG

80080 - Pit Boss

Eliminates poor pipe connections to polypropylene pits due to subsidence of the ground or poor installation connections.

130 L x 130 W x 55mm H | 0.14kg

