

**Product Name:**  
Storm Catch GPT S9

**EI Code:**  
Class B - 82351

**Dimensions:**  
1000 H x 1113 W

**Weight:**  
125kg

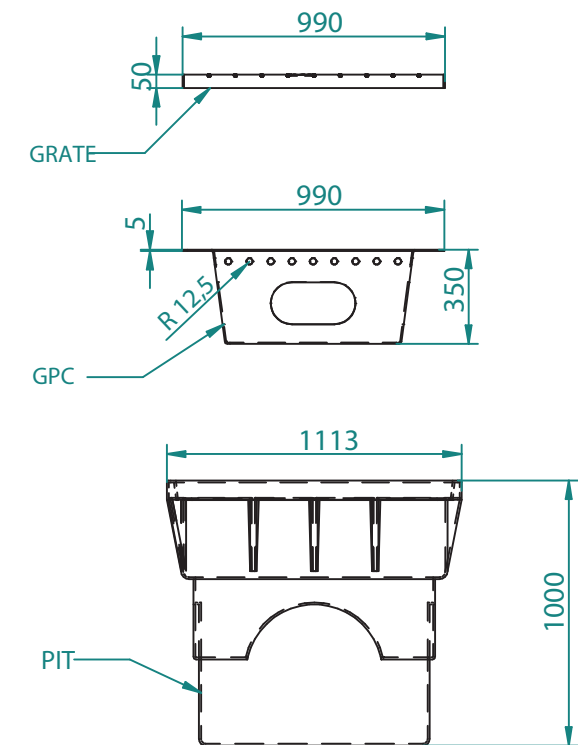
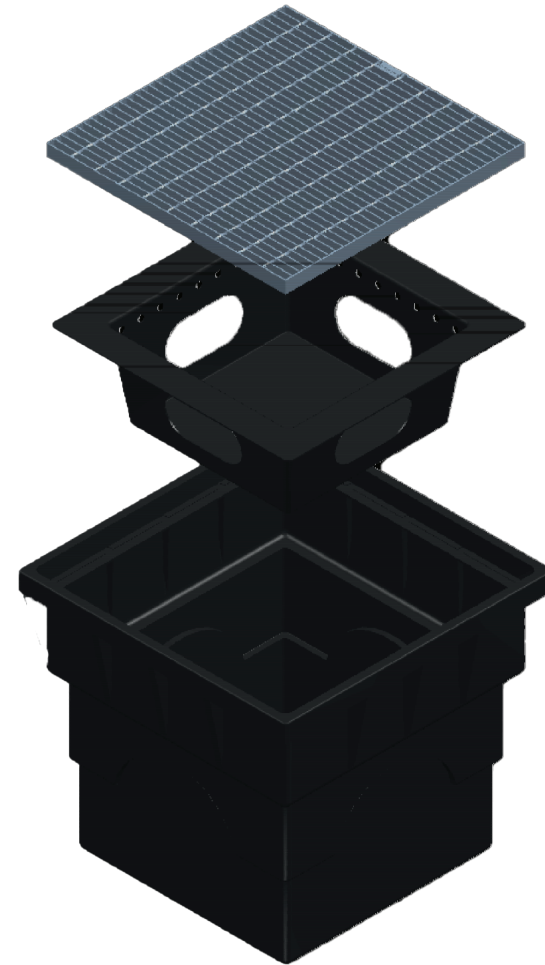
**Material:**  
Grate - Galvanised Steel  
SQID - LLDPE & Stainless Steel  
Pit - LLDPE

**Warranty:**  
10 years

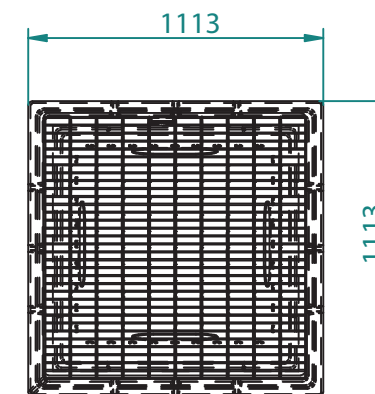
### Additional Information:

#### Key features of the Storm Catch GPT Range:

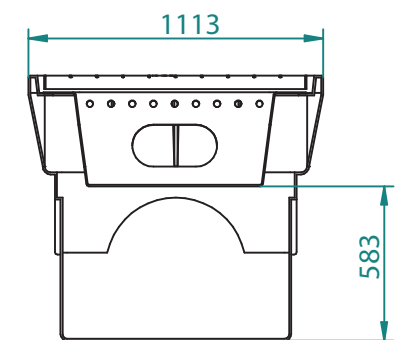
- / High Flow Rate Bypass Capabilities
- / Built with 2mm Aperture Stainless Steel Mesh
- / Storage of captured dry gross pollutants
- / Strong but lightweight pits with trafficable grates
- / Multiple Sizes to suit the requirements of the application
- / Easy and simple maintenance, removal of gross pollutants greater than 2mm at the treatable flow rate <98%
- / Simple Installation
- / Treatable flow rate 200L/sec\*
- / Bypass flow rate 232L/sec\*
- / Outlet pipe size up to 450mm diameter



FRONT VIEW



TOP VIEW



SECTION VIEW

Disclaimer: All measurements are in millimetres and are subject to change without any prior notice. It is advised for this product to be installed by a professional contractor to ensure installation is correct. Further information is available at [www.everhard.com.au](http://www.everhard.com.au)

\* Flow rates do not take into consideration any flow rate loss through the grate or size of the outlet pipes