

EasyDRAIN Grate Options



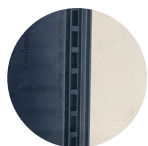
BLACK POLYMER

- / Made in Australia
- / Suitable for: residential driveways, pathways, gardens and any salt affected areas (pools, coastal areas)
- / Flow rate: 417L/min/metre*
- / Manufactured from 100% recycled polymer



HEEL FRIENDLY POLYMER

- / Made in Australia
- / Suitable for: residential driveways, pathways, gardens, pedestrian areas and any salt affected areas (pools, coastal areas)
- / Flow rate: 175L/min/metre*
- / Adheres to industry standards AS1428 - designed for access and mobility
- / Manufactured from 100% recycled polymer



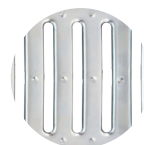
EDGE

- / Made in Australia
- / Suitable for: pathways, gardens and any salt affected areas (pools, coastal areas)
- / Flow rate: 149L/min/metre*
- / Adheres to industry standards AS1428 - designed for access and mobility
- / Manufactured from 100% recycled polymer



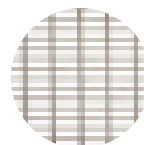
PRESSED STAINLESS STEEL

- / Suitable for: residential driveways** and pathways
- / Not suitable for: salt and chemical affected areas (pools, coastal areas)
- / Flow rate: 458L/min/metre*



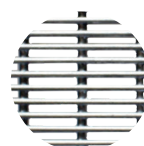
PRESSED GALVANISED STEEL

- / Suitable for: residential driveways** and pathways
- / Not suitable for: salt and chemical affected areas (pools, coastal areas)
- / Flow rate: 230L/min/metre*



EURODESIGN 316 STAINLESS STEEL

- / Suitable for: residential driveways**, pathways, gardens and any salt affected areas (pools, coastal areas)
- / Adheres to industry standards AS1428 - designed for access and mobility



GALVANISED ROUND BAR

- / Suitable for: residential driveways** and pathways
- / Not suitable for: salt and chemical affected areas (pools, coastal areas)
- / Adheres to industry standards AS1428 - designed for access and mobility

* Flow ratings are compared in a like-for-like comparison assuming a 1 in 200 site gradient and catchment area of 250m²

** Flat upper surface of metal grate may show signs of a slight indentation over time if used in a driveway