

Concrete Grate Surrounds

SPEC PACK

Concrete Grate Surrounds

Utilising a complete concrete grate surround is the most beneficial for time and labour when needing to install a field gully inlet. Traditional insitu install methods require more testing, time and assurance over purchasing a complete unit. Concrete Grate Surrounds will result in a greater life longevity over insitu installs and are ready to bear traffic loads almost immediately.

Everhard's range of concrete grate surrounds are designed for the civil and commercial environment and are available in a range of sizes, with the option of Class B & D grates,

Additional Information:

- / Manufactured to AS3996
- / Grates are hinged and bolted

| EI CODE | PRODUCT DESCRIPTION | CLASS LOADING | CLEAR OPENING | SURROUND SIZE | DEPTH |
|---------|---|---------------|---------------|---------------|-------|
| 21190 | Concrete Grate Surround 450 x 450 Class B | B | 450 x 450 | 820 x 800 | 200 |
| 21191 | Concrete Grate Surround 450 x 450 Class D | D | 450 x 450 | 820 x 800 | 200 |
| 21192 | Concrete Grate Surround 600 x 600 Class B | B | 600 x 600 | 1000 x 950 | 200 |
| 21193 | Concrete Grate Surround 600 x 600 Class D | D | 600 x 600 | 1000 x 950 | 200 |
| 21194 | Concrete Grate Surround 900 x 600 Class B | B | 900 x 600 | 1250 x 1000 | 200 |
| 21195 | Concrete Grate Surround 900 x 600 Class D | D | 900 x 600 | 1250 x 1000 | 200 |
| 21196 | Concrete Grate Surround 900 x 900 Class B | B | 900 x 900 | 1300 x 1250 | 200 |
| 21197 | Concrete Grate Surround 900 x 900 Class D | D | 900 x 900 | 1300 x 1250 | 200 |

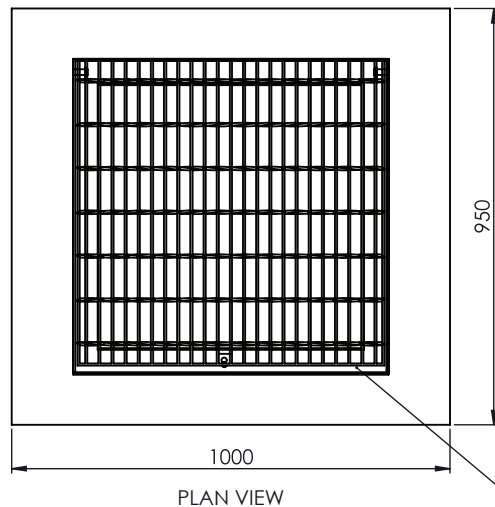


Concrete Grate Surrounds



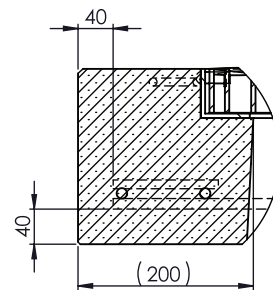
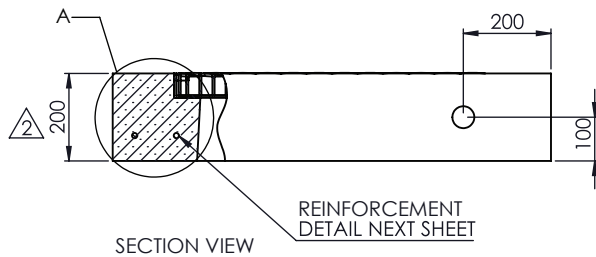
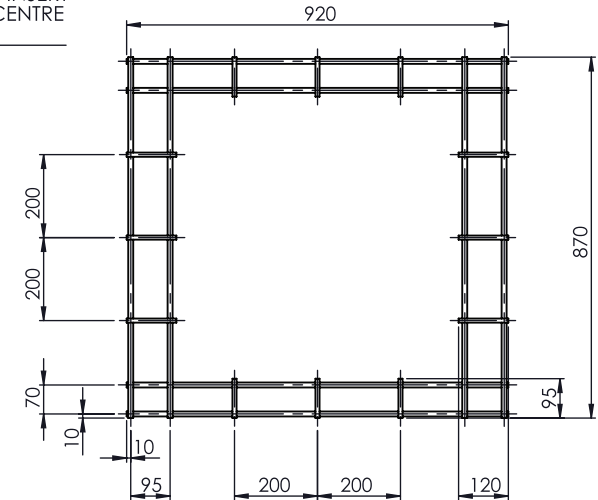
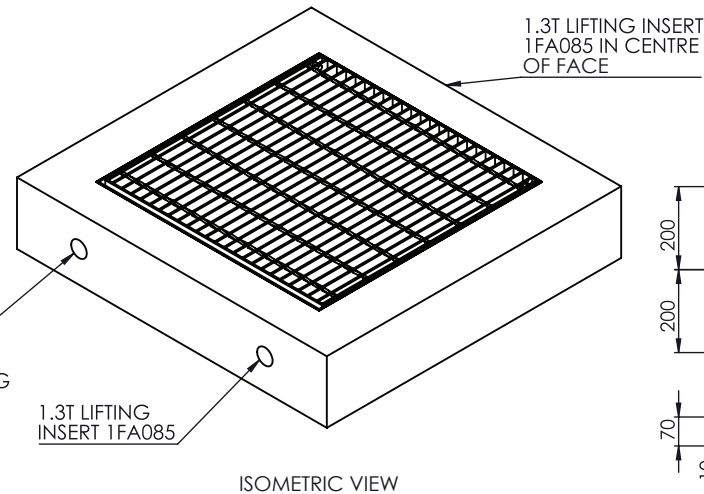
SPEC PACK

Concrete Grate Surrounds 600 x 600 Specification Drawings - 21192 & 21193



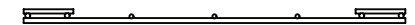
EI CODE: 21193
GALV. GRATE & FRAME
600 X 600 CLEAR OPENING
CLASS D
EVERHARD ITEM: 15061

EI CODE: 21192
GALV. GRATE & FRAME
600 X 600 CLEAR OPENING
CLASS B
EVERHARD ITEM: 15034



NOTES:

1. CONCRETE STRENGTH:
 - LIFTING: 25MPa MINIMUM
 - AFTER 28 DAYS: 40MPa MINIMUM
2. SIKA POLY FIBRES: 5.0kg/m³
3. MINIMUM COVER: 40mm



NOTES:

1. WELD ALL CONNECTIONS
2. MATERIAL: STEEL DEFORMED BAR
3. CUT LIST:

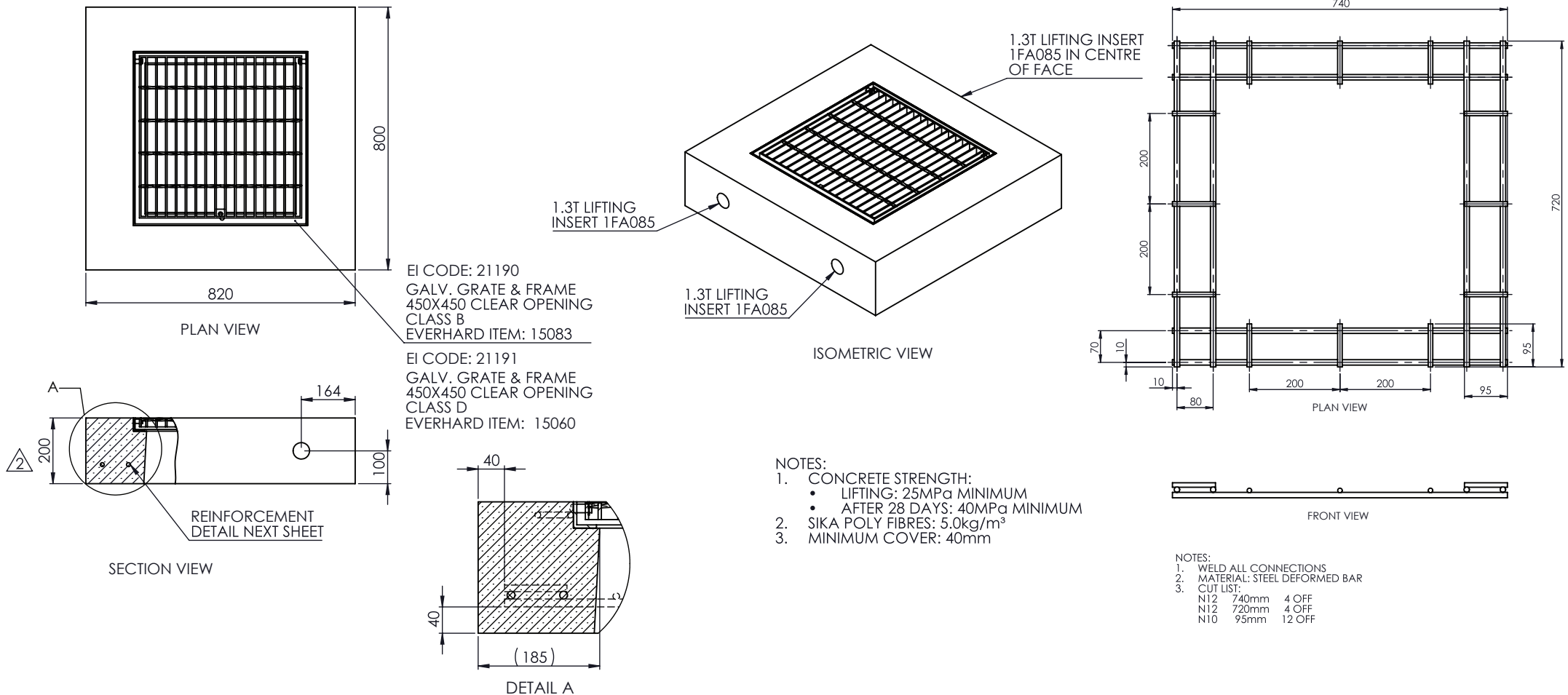
| | | |
|-----|-------|-------|
| N12 | 920mm | 4 OFF |
| N12 | 870mm | 4 OFF |
| N10 | 120mm | 6 OFF |
| N10 | 95mm | 6 OFF |

Concrete Grate Surrounds



SPEC PACK

Concrete Grate Surrounds 450 x 450 Specification Drawings - 21190 & 21191

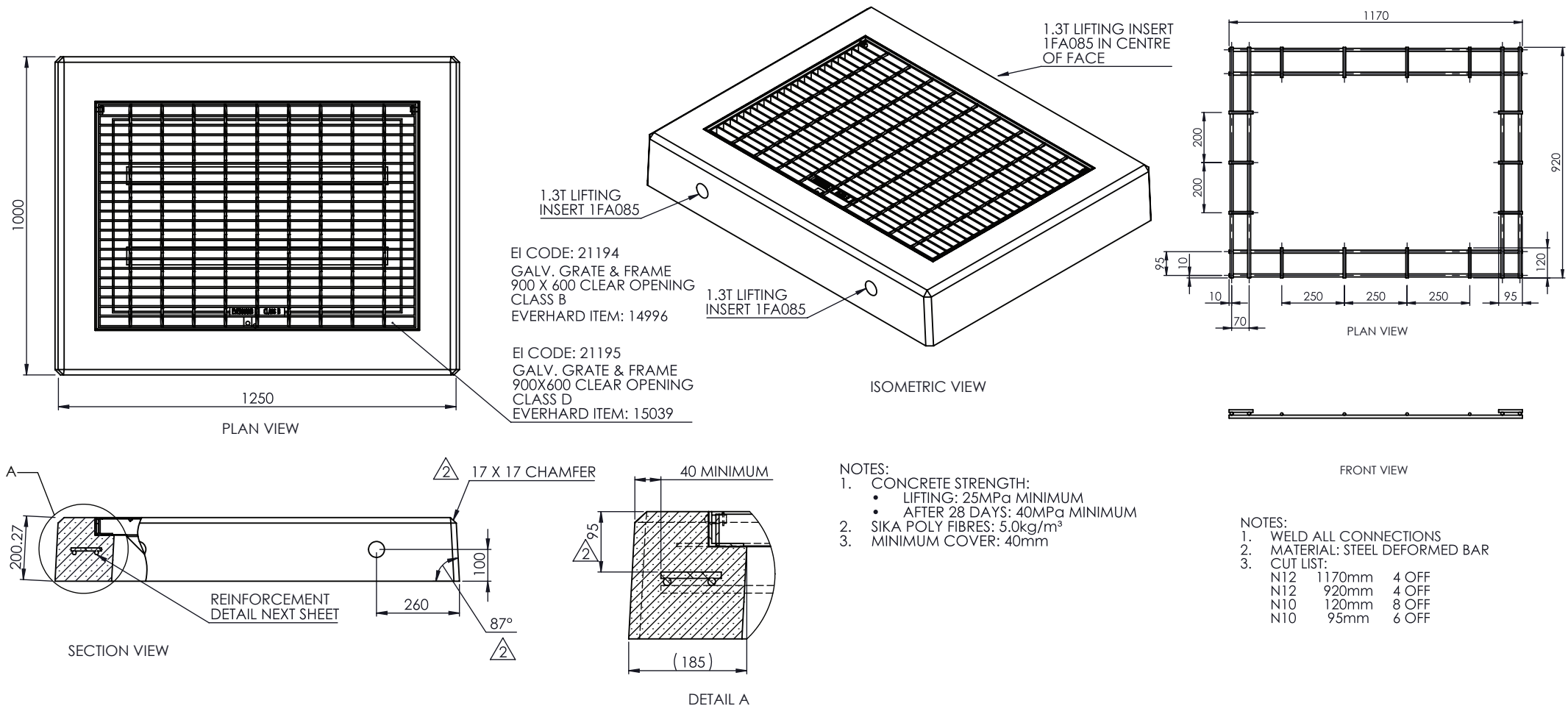


Concrete Grate Surrounds



SPEC PACK

Concrete Grate Surrounds 900 x 600 Specification Drawings - 21194 & 21195



Concrete Grate Surrounds



SPEC PACK

Concrete Grate Surrounds 900 x 900 Specification Drawings - 21196 & 21197

