

# UNIVERSAL RISER

## INSTALLATION MANUAL

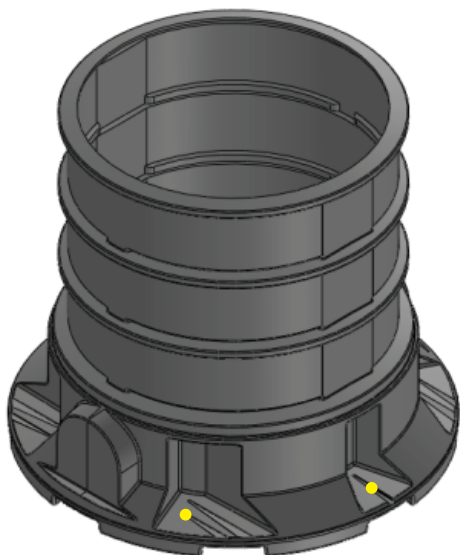


### PRODUCTS TO USE THE UNIVERSAL RISER WITH

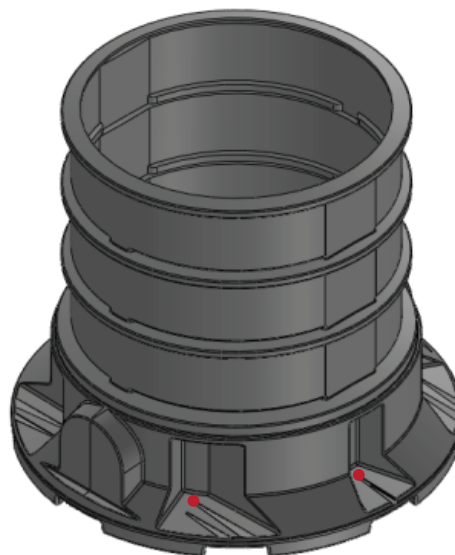
EI CODE	PRODUCT DESCRIPTION	DRILL GUIDE TO FOLLOW
82260	Nipper Gross Pollutant Trap	1
80501, 80502	1000L Polymer Grease Arrestor	1
82202C	1000L Polymer Pump Well	1
82200D	450L/250L Polymer Pump Well	2

### INSTALLATION INSTRUCTIONS

1. Fit the Universal Riser on the top rim on the vessel of the product you are using. Specifically for the Nipper, rotate the riser so that the base sits securely on the top rim of the Nipper.
2. Using self-tapping screws, secure the flange of the riser to the top rim of the vessel of the product. Locate where to place the screws using the drills guides (table above explains which product follows which drill guide) around the riser as shown below.



**DRILL GUIDE 1**

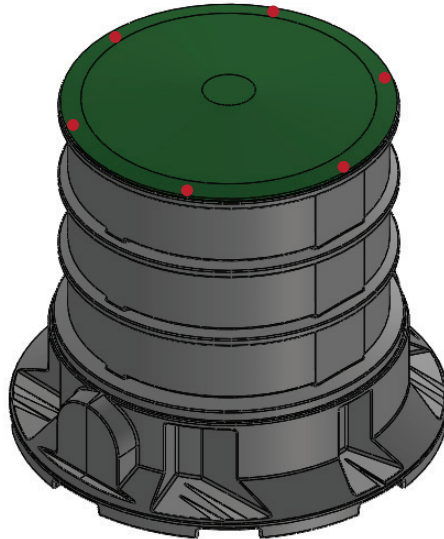


**DRILL GUIDE 2**

3. Using the cover that has been provided with the product you are adding the Universal Riser to, secure it to the top of the riser with self-tapping screws. Screw spots are suggested as per the follow image.

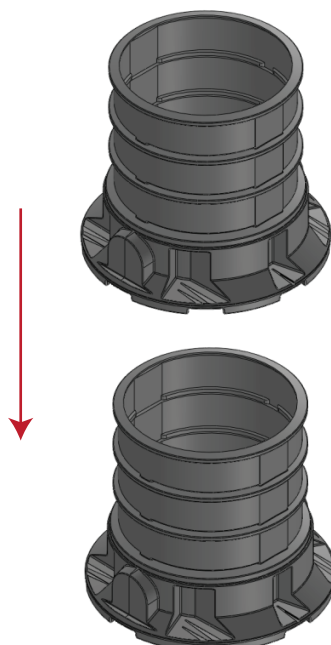
# UNIVERSAL RISER

## INSTALLATION MANUAL



### OPTIONAL: INCREASING HEIGHT WITH AN ADDITIONAL RISER

1. Another riser can be stacked onto the lower riser to increase the overall height of the product. To do this, stack the second riser on top of the lower riser.
2. Secure the second riser to the lower riser by following Drill Guide 2.
3. Proceed with Step 3 of original installation instructions to attach cover.



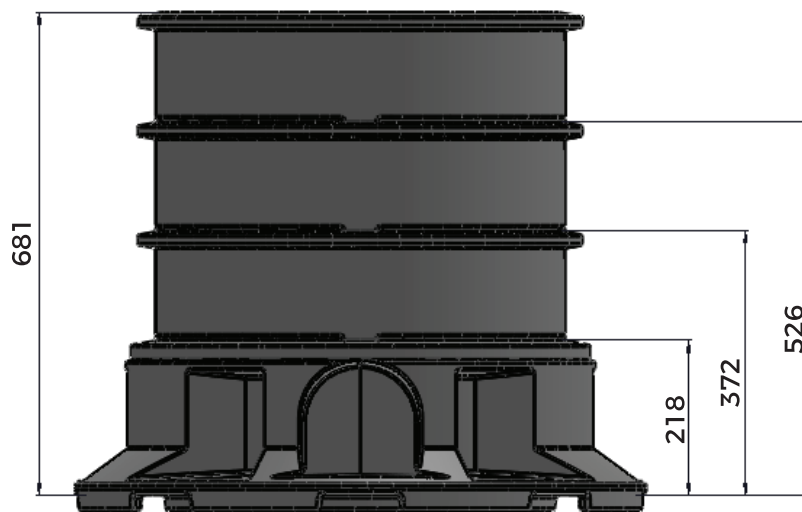
# UNIVERSAL RISER

## INSTALLATION MANUAL

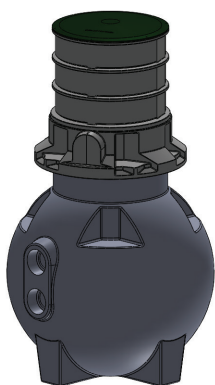


### OPTIONAL: SHORTENING THE HEIGHT OF THE RISER

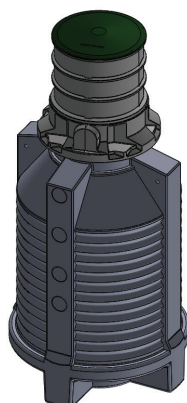
1. If the riser is too tall for the application you are using it for, there is three cutting points that allow you to shorten the height without compromising the ability to attach the cover securely.
2. Using the following image as a guide, cut the riser to one of the three cutting points using a jigsaw or rotor
3. Proceed with Step 3 of original installation instructions to attach cover.



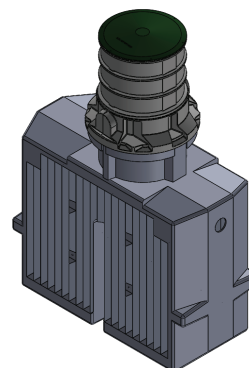
### EXAMPLES OF UNIVERSAL RISER ON THE FOUR APPLICABLE PRODUCTS



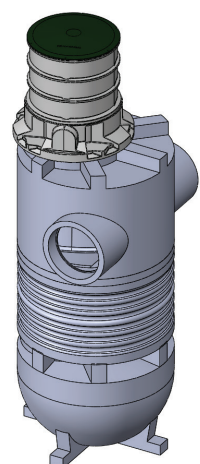
**450L/250L POLYMER  
PUMP WELL**



**1000L POLYMER  
PUMP WELL**



**1000L POLYMER  
GREASE ARRESTOR**



**NIPPER**

**NOTE: THIS IS NOT TO BE USED FOR TRAFFICABLE APPLICATIONS**