

**Product Name:**  
450L Concrete Pump Well

**EI Code:**  
12010

**Dimensions:**  
1230 H x Ø 1020

**Weight:**  
830kg

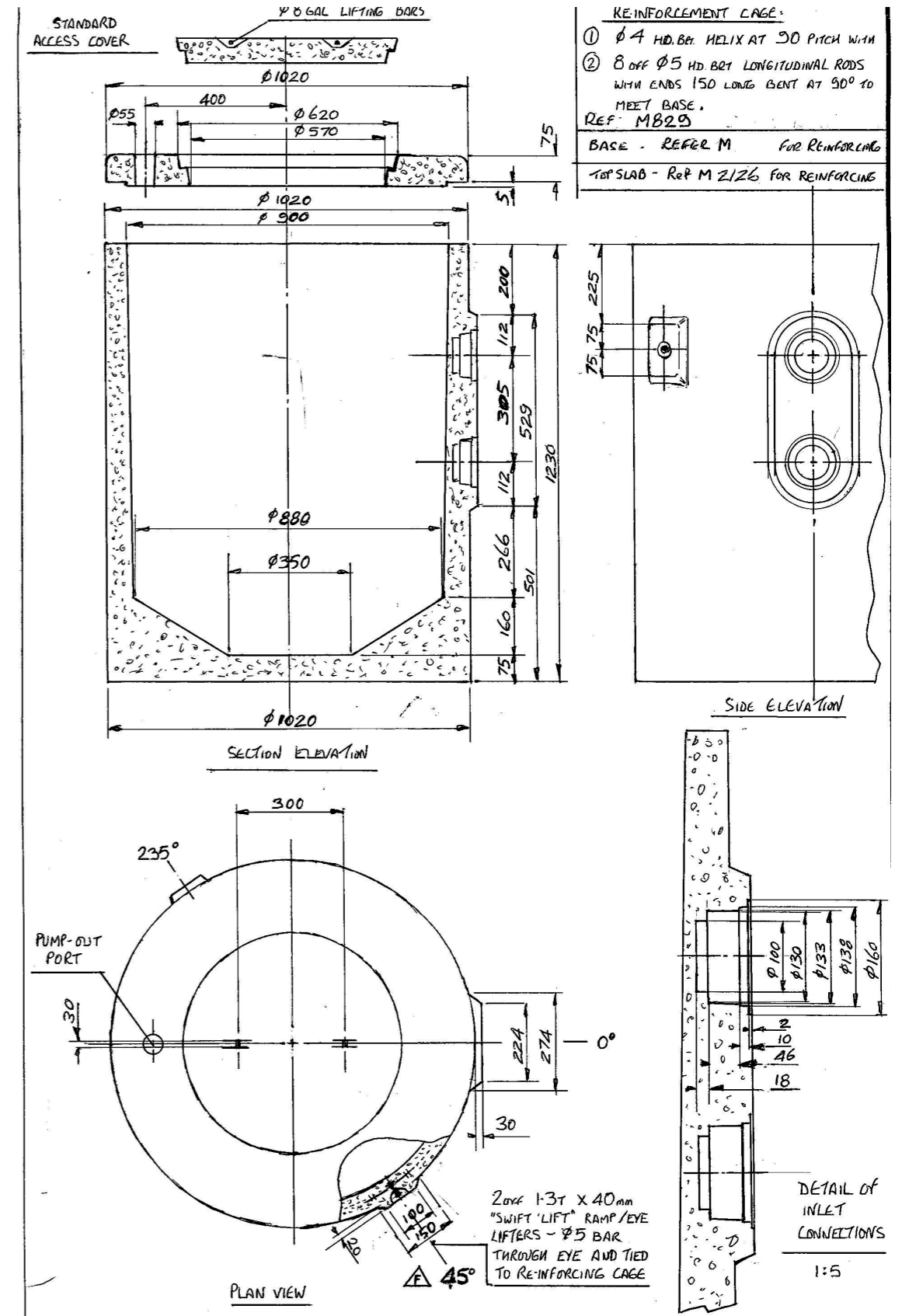
**Material:**  
Concrete

**Additional Information:**

Everhard's Pre Cast Concrete Pump well range consists of many options in capacity, type of lids for trafficable conditions and pump systems depending on stormwater or sewerage requirements.



Product Code	Description	Weight (kg)
12010	450L pumpwell complete with light duty lid	830
12510	450L pumpwell case only	713
12600	450L pumpwell lid only	96



Disclaimer: All measurements are in millimetres and are subject to change without any prior notice. It is advised for this product to be installed by a professional contractor to ensure installation is correct. Further information is available at [www.everhard.com.au](http://www.everhard.com.au)