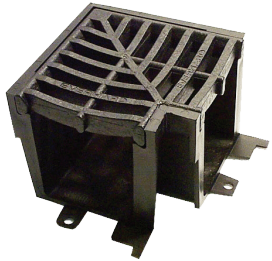
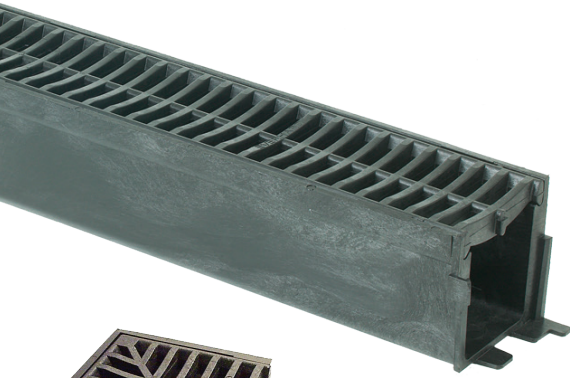


# Everdrain Installation Instructions

**IMPORTANT: Everdrain channel should always be installed with the grate fitted**



1. Excavate a trench to at least 50mm deeper than the channel's overall depth and not less than 75mm more than the width at its lip.
2. The surrounding surface should be sufficiently sloped in the direction of the channel flow to promote adequate run-off.
3. Clip channel sections together before placement in the trench. Pre-assemble sections up to 3 metres long. Longer installations can be assembled and installed in a number of sub-sections.
4. Install Everhard Everdrain Rainwater Pits as connection points for intersecting surface drains or to connect to pipes etc. Fix end cap to end of channel and attach a section of 90mm pipe connecting the channel to the Rainwater Pit.
5. 75mm wide, 8 to 10 thick expansion compensation material such as "Able-Flex" must be fitted along both sides of the channel, and extend for its whole length. Attach to the channel with adhesive tape. The upper edge should be level with the upper edge of the channel.
6. Pour enough concrete slurry mix into the trench so the channel can be 'worked' into the slurry so that the upper edges of the channel are at the required height.

7. With Everdrain in place pour concrete along the outside walls of the channel to form walls.

8. With slabs or bricks as a surrounding paved surface, step the concrete wall to help support the edge of the paving.

9. Install paving so that it does not crush the side of the channel.

10. With bitumen (or no paving), the poured concrete side walls must extend to the upper channel lip.

11. Grade surrounding surfaces to the channel to encourage drainage.

