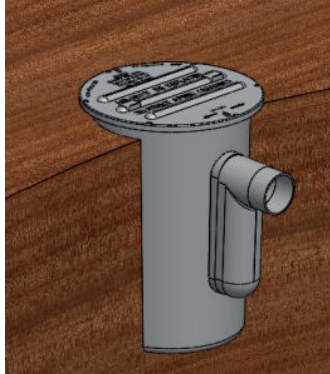


45L GREASE TRAP RISER

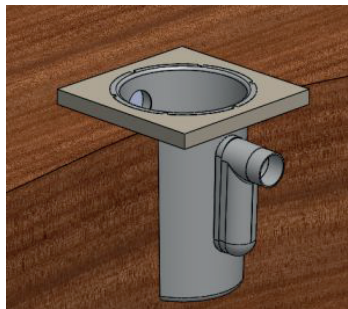
INSTALLATION MANUAL



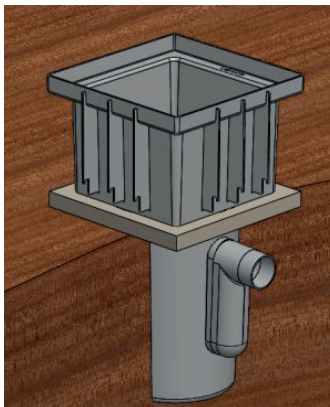
1. Ensure the 45L polymer grease trap is installed level, check with a spirit level.



2. Remove the polymer grease trap lid. Pour a concrete pad approximately 550mm square and 50mm deep around the top of the 45L Grease Trap.



3. Measure the height required for the riser and trim accordingly to the finished height by cutting the bottom part of the riser using a jigsaw or reciprocating saw.
4. Install a Series 450 Riser on to the concrete pad around the grease trap, ensuring the sides of the riser rests on the lip of the grease trap

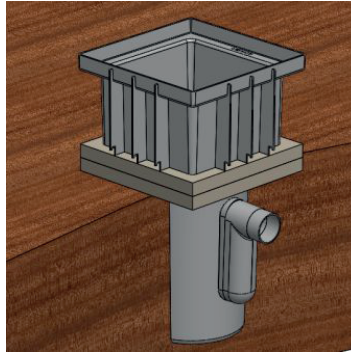


45L GREASE TRAP RISER

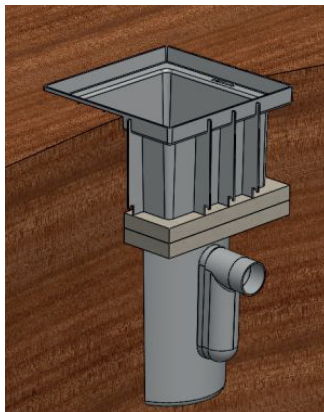
INSTALLATION MANUAL



5. Pour concrete around the Series 450 Riser approx 50mm high and 50mm wide on the bottom of the riser where it rests on the concrete pad



6. Backfill around the Series 450 Riser ensuring the riser does not move.



7. Install the Series 450 Polymer Lid on top of the riser. Insert stainless steel self tapping screws into the centre of the external sides of the polymer lid through the Series 450 Riser.

