

Product Name:
4000L Septic Tank

EI Code:
87210 - without partition
87211 - with partition

Dimensions:
2335 H x 1880 D

Weight:
201kg - without partition
211kg - with partition

Material:
PP

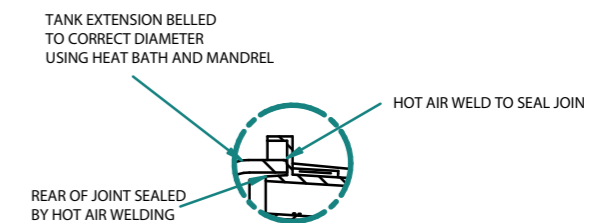
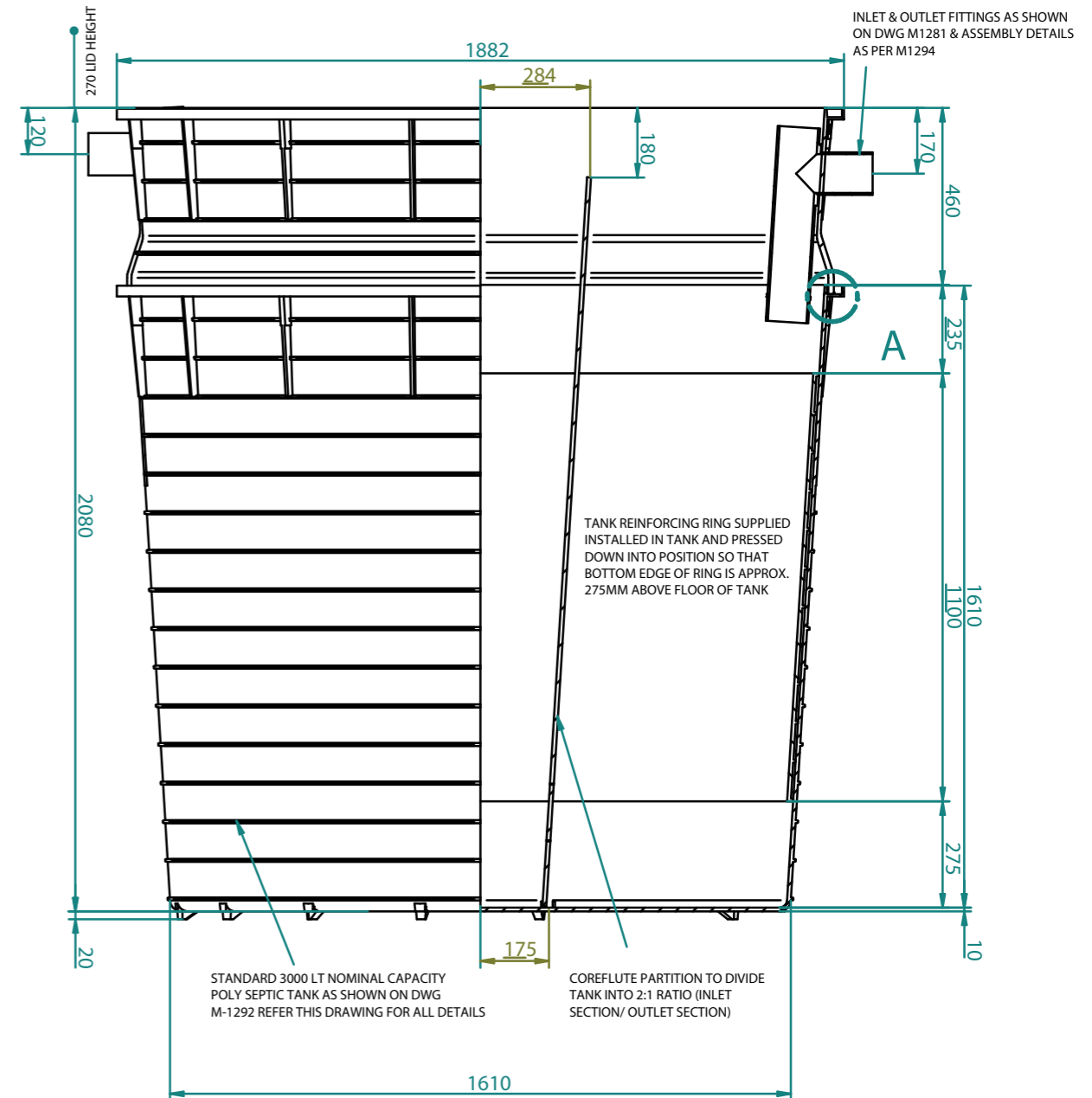
Warranty:
15 Years

Additional Information:

It is a **legal requirement** that all domestic septic tanks over 2050L in NSW & VIC be installed with a partition. Larger capacity collection wells available using multiple tanks.



Product Code	Description	Weight kg	A Overall Height	B Liquid Level	C Tank Rim to Invert of Outlet	D Under Roof to Invert of Outlet	E Maximum Cover to Inlet Pipe	F Diameter at Top	G Maximum Cover to Outlet Pipe
87210	4000L Septic Tank with no partition	201	2335	1845	225	475	325	1880	375
87211	4000L Septic Tank with partition	210	2335	1845	225	475	325	1880	375



DETAIL A

*Drawing is without lid on top of septic tank

Disclaimer: All measurements are in millimetres and are subject to change without any prior notice. It is advised for this product to be installed by a professional contractor to ensure installation is correct. Further information is available at www.everhard.com.au